

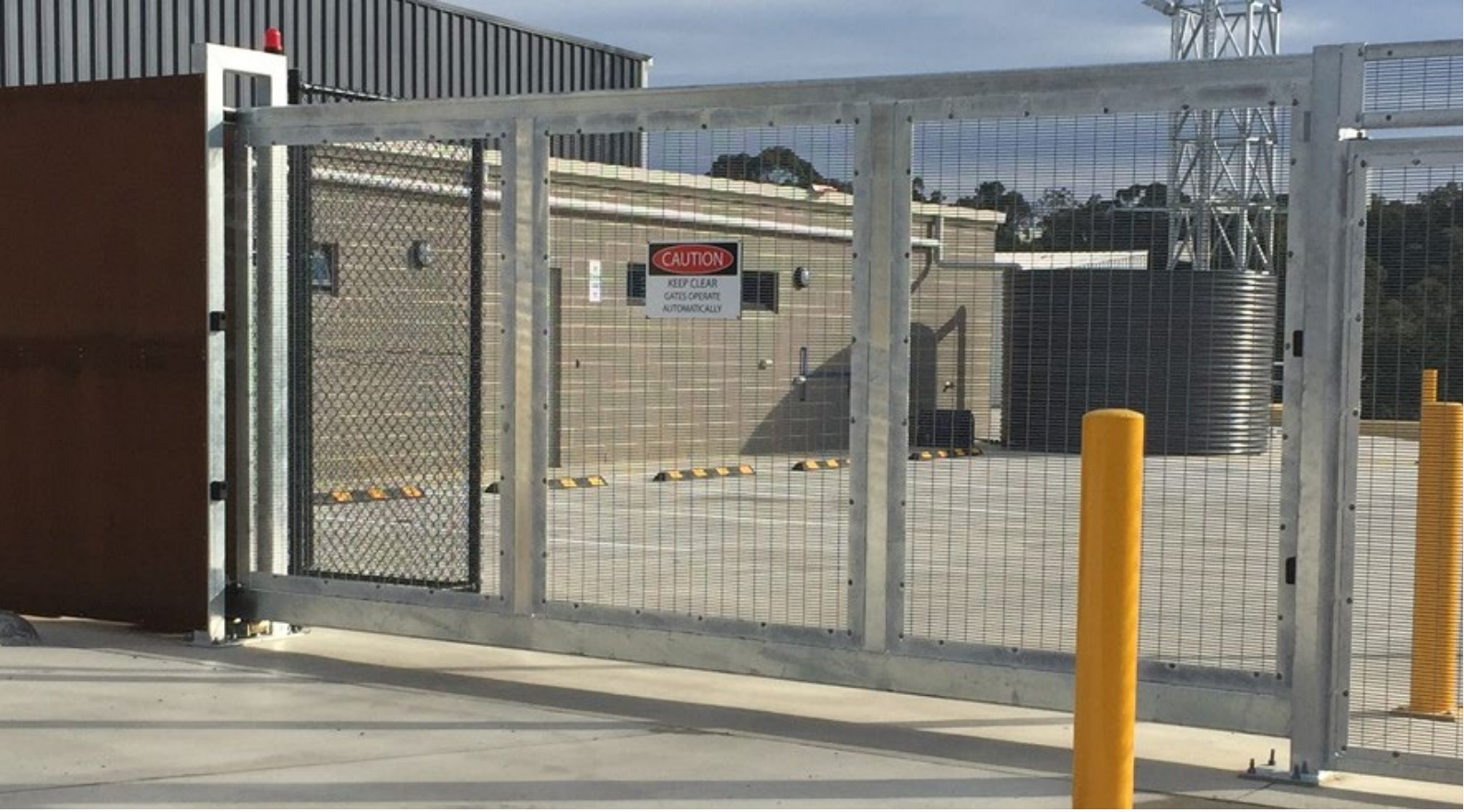


GRYFFIN
HIGH SECURITY FENCING & GATES
Smarter solutions, guaranteed.

CANTILEVER GATE



Securemax®



CANTILEVER GATE SYSTEMS

Gryffin High Security Fencing and Gates is proud to be serving industry since 1984. For over forty years the company has been manufacturing Cantilever Gates for commercial and industrial use, setting the pace with innovative design and proven product excellence.

Gryffin manufactures a comprehensive range of Cantilever Gates for all commercial and industrial applications including;

- Factories
- Warehouses
- Distribution Centres
- Carpark Entrances
- Loading Docks
- Sporting Complexes
- Local and State Government Projects
- Schools and other Education facilities

We use computer aided design programs extensively in our research and development process seeking to improve the strength and efficiency in our product offering.

We make to measure to ensure correct fit and that installation on site is completed quickly and efficiently.

Don't hesitate to contact Gryffin to discuss your specific application requirements.

SPECIFICATIONS

Sub Frame

Gate structure is manufactured from pre-galvanised steel SHS/RHS sections.

Material thickness is dependent on the opening width and the security requirements of the project.

Size

The maximum gate size is 25,000mm wide in single leaf, 50,000mm in bi-parting arrangements.

Height of gate to suit fence line: standard heights 1,800mm – 2,400mm, higher if required.

Track Detail

200mm Cantilever Track.

Gate Infill

Infill typically Securemax 358 welded mesh.

Gate Support

Support for leaf is via pre-galvanised steel SHS Tunnel Posts. Fixing of Tunnel Posts is by directly bolting to concrete structure or encased within concrete footings.

Automation

Automation is provided via high duty electro-mechanical gate operator.

Safety supplied as standard with in built obstacle detection, dual height and dual side photo-electrical beams, flashing light and warning sign.

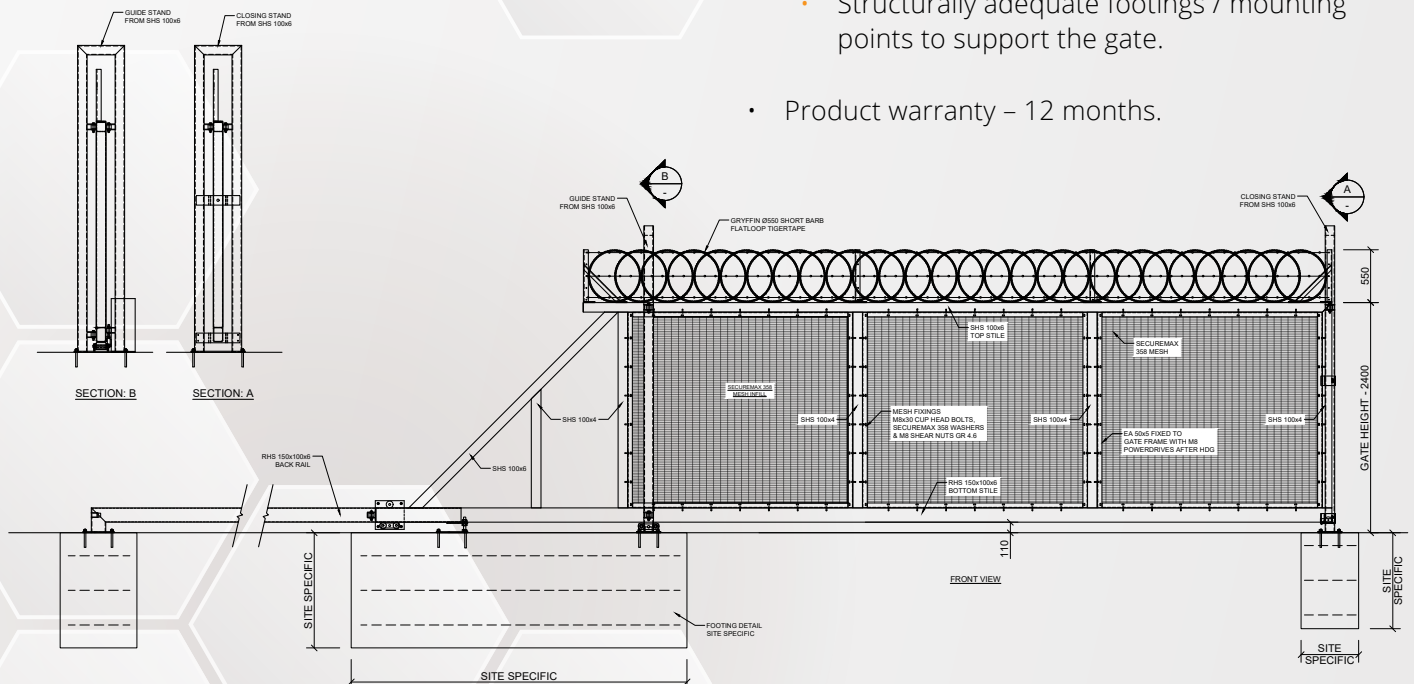
A range of control options are available including access control, radio control or Vehicle detection loop system.

Finish Options

- Hot Dip Galvanised (standard).
- Dulux Duralloy or Interpon D1000 powdercoat finishes are suitable.
- Electro-static twin coat wet sprayed paint.

Special Notes

- The power supply required for the motor is either:
 - Single phase hard wired (10 amp), located within one metre of the motor.
 - Low voltage 24v wired supply, within one metre of the motor.
 - 24v High efficiency solar power.
- Work by others:
 - Power supply provision if required.
 - Structurally adequate footings / mounting points to support the gate.
- Product warranty – 12 months.





Phone: 1800 672 066 (Australia Wide) | **Website:** www.gryffin.com.au



Victoria

8 Bessemer Road,
Bayswater North VIC 3153

sales@gryffin.com.au

New South Wales

138 Fairey Road,
South Windsor NSW 2756

nswsales@gryffin.com.au

ABN 36 660 046 695. © Gryffin Pty Ltd.